

Archaeological monitoring and recording at Hill Farm Cottage, Millers Green Road, Willingale, Essex, CM5 0PZ

July 2017



by Dr Elliott Hicks
figures by Adam Tuffey and Sarah Carter

fieldwork by Mark Baister

Commissioned by Neil Caley
on behalf of Mr and Mrs Holloway

NGR: TL 58605 07591 (centre)
Planning reference: EPF/2947/15 and EPF/2985/15/LB
CAT project ref.: 16/02d
Epping Forest Museum accession code: EPPMS: 2017.3
ECC code: WLHF 16
OASIS reference: colchest3-242610



Colchester Archaeological Trust
Roman Circus House
Roman Circus Walk,
Colchester,
Essex CO2 7GZ

tel.: 01206 501785
email: lp@catuk.org

CAT Report 1144
September 2017

Contents

1	Summary	1
2	Introduction	1
3	Archaeological background	1
4	Results	2
5	Finds	2
6	Discussion	2
7	Acknowledgements	2
8	References	3
9	Abbreviations and glossary	3
10	Contents of archive	3
11	Archive deposition	3

Figures after p4

Appendix 1 CAT WSI

Appendix 2 OASIS Summary

List of photographs, maps and figures

Cover: general site shot

Photograph 1 Modern ditch - looking north northeast 2

Map 1 OS second edition, 1897, six inch map 1

Fig 1 Site location

Fig 2 Results of the archaeological monitoring

Fig 3 Representative sections

1 Summary

Archaeological monitoring and recording was carried out at Hill Farm Cottage, Millers Green Lane, Willingale in advance of alterations to the Listed Building and an extension which includes a basement. Hill Farm Cottage is a Grade II listed building, and is located immediately to the west of a Roman-era findspot. A single modern ditch was uncovered.

2 Introduction (Fig 1)

This report presents the results of archaeological monitoring and recording at Hill Farm Cottage, Millers Green Lane, Willingale, Essex, which was carried out on the 25th July 2017. The work was commissioned by Neil Caley on behalf of Mr and Mrs Holloway, in advance of alterations to the Listed Building and an extension which includes a basement, and was undertaken by Colchester Archaeological Trust (CAT).

In response to consultation with Essex County Council Place Services (ECCPS), Historic Environment Advisor Maria Medlycott advised that in order to establish the archaeological implications of this application, the applicant should be required to commission a scheme of archaeological investigation in accordance with the *National Planning Policy Framework* (DCLG 2012).

All archaeological work was carried out in accordance with a *Brief for archaeological monitoring at Hill Farm Cottage, Millers Green Road*, detailing the required archaeological work, written by Maria Medlycott (ECCPS 2016), and a Written Scheme of Investigation (WSI) prepared by CAT in response to the brief and agreed with ECCPS (CAT 2016).

In addition to the brief and WSI, all fieldwork and reporting was done in accordance with English Heritage's *Management of Research Projects in the Historic Environment (MoRPHE)* (English Heritage 2006), and with *Standards for field archaeology in the East of England* (EAA 14 and 24). This report mirrors standards and practices contained in the Institute for Archaeologists' *Standard and guidance for archaeological watching briefs* (ClfA 2014a) and *Standard and guidance for the collection, documentation, conservation and research of archaeological materials* (ClfA 2014b).

3 Archaeological background



Map 1 OS second edition, 1897, six inch map showing Hill Farm with ditch

The EHER shows that Hill Farm is a late 14th-early 15th century timber-framed hall house. It is Grade II listed (NHLE no. 1168734) (EHER 33107). The historical cartographic evidence shows the building, together with its accompanying farm-

buildings (Map 1). These OS maps also show a substantial ditch to the rear of the cottage which may have formed one part of a moated enclosure or the boundary to Miller's Green itself. It is possible that the re-development of the site will uncover archaeological features and deposits relating to the origins of the historic site.

A Roman brooch was also found in the field immediately to the east of the site (EHER 55509).

4 Results (Figs 2-3)

An area measuring approximately 64.6m² was machine excavated to a depth of 0.38-0.42m under archaeological supervision to the rear of the house.

The excavation occurred through two layers. Modern topsoil (L1, c 0.21-0.28m thick, friable, dry dark brown/black sandy-silt) sealed a layer of natural clay (L2, firm, moist, light yellow clay).

A single ditch was observed crossing the site. It was aligned S-N/NNE, measured approximately 1m in width, and was still partially extant near to the house (see photo 1).



Photograph 1 Modern ditch - looking north northeast

5 Finds

No archaeological finds were recovered.

6 Discussion

Archaeological monitoring and recording was undertaken at Hill Farm Cottage to determine the origins of this historic site, and due to the proximity of the site to a Roman-era findspot.

The ditch to the rear of the property shown on historic OS maps was observed during monitoring. These maps show that it was still in existence until the mid-20th century.

7 Acknowledgements

CAT thanks Neil Caley and Mr and Mrs Holloway for commissioning and funding the work. The project was managed by C Lister and carried out by M Baister. Figures were prepared by C Lister and S Carter. The project was monitored for Essex County Council by Maria Medycott.

8 References

Note: all CAT reports, except for DBAs, are available online in PDF format at <http://cat.essex.ac.uk>

CAT	2014	<i>Health & Safety Policy</i>
CAT	2017	<i>Written Scheme of Investigation (WSI) for archaeological monitoring at Hill Farm Cottage, Millers Green Road, Willingale, Essex, CM5 0PZ</i>
CifA	2014a	<i>Standard and Guidance for archaeological watching brief</i>
CifA	2014b	<i>Standard and guidance for the collection, documentation, conservation and research of archaeological materials</i>
DCLG	2012	<i>National Planning Policy Framework</i>
David Gurney	2003	<i>Standards for field archaeology in the East of England</i> . East Anglian Archaeology Occasional Papers 14 (EAA 14).
ECCPS	2016	<i>Brief for archaeological monitoring at Hill Farm Cottage, Millers Green Road, Willingale</i> , by Maria Medlycott
English Heritage	2006	<i>Management of Research Projects in the Historic Environment (MoRPHE)</i>
Medlycott, M	2011	<i>Research and archaeology revisited: A revised framework for the East of England</i> . East Anglian Archaeology Occasional Papers 24 (EAA 24)

9 Abbreviations and glossary

CAT	Colchester Archaeological Trust
CifA	Chartered Institute for Archaeologists
context	specific location of finds on an archaeological site
ECC	Essex County Council
ECCHEA	Essex County Council Historic Environment Advisor
ECCPS	Essex County Council Place Services
feature (F)	an identifiable thing like a pit, a wall, a drain: can contain 'contexts'
Iron Age	period from 700 BC to Roman invasion of AD 43
layer (L)	distinct or distinguishable deposit (layer) of material
modern	period from c AD 1800 to the present
natural	geological deposit undisturbed by human activity
NGR	National Grid Reference
OASIS	O nline A ccess to the I ndex of A rchaeological I nvestigation S , http://oasis.ac.uk/pages/wiki/Main
residual	something out of its original context, eg a Roman coin in a modern pit
Roman	the period from AD 43 to c AD 410
Section	(abbreviation sc or Sx) vertical slice through feature/s or layer/s
wsI	written scheme of investigation

10 Contents of archive

Finds: n/a

Paper and digital record

One A4 document wallet containing:

The report (CAT Report 1144)

CBCPS evaluation brief, CAT written scheme of investigation

Original site record (feature and layer sheets, finds record, plans)

Site digital photos and log, architectural plans, attendance register, risk assessment

11 Archive deposition

The paper and digital archive is currently held by the Colchester Archaeological Trust at Roman Circus House, Roman Circus Walk, Colchester, Essex, CO2 7GZ, but will be permanently deposited with Epping Forest Museum under accession code: EPPMS: 2017.3.

© Colchester Archaeological Trust 2017

Distribution list

Neil Caley
Mr and Mrs Holloway
Maria Medlycott, Essex County Council Place Services
Essex Historic Environment Record



Colchester Archaeological Trust

Roman Circus House
Roman Circus Walk,
Colchester,
Essex CO2 7GZ

tel.: 01206 501785

email: lp@catuk.org

Checked by: Philip Crummy

Date:

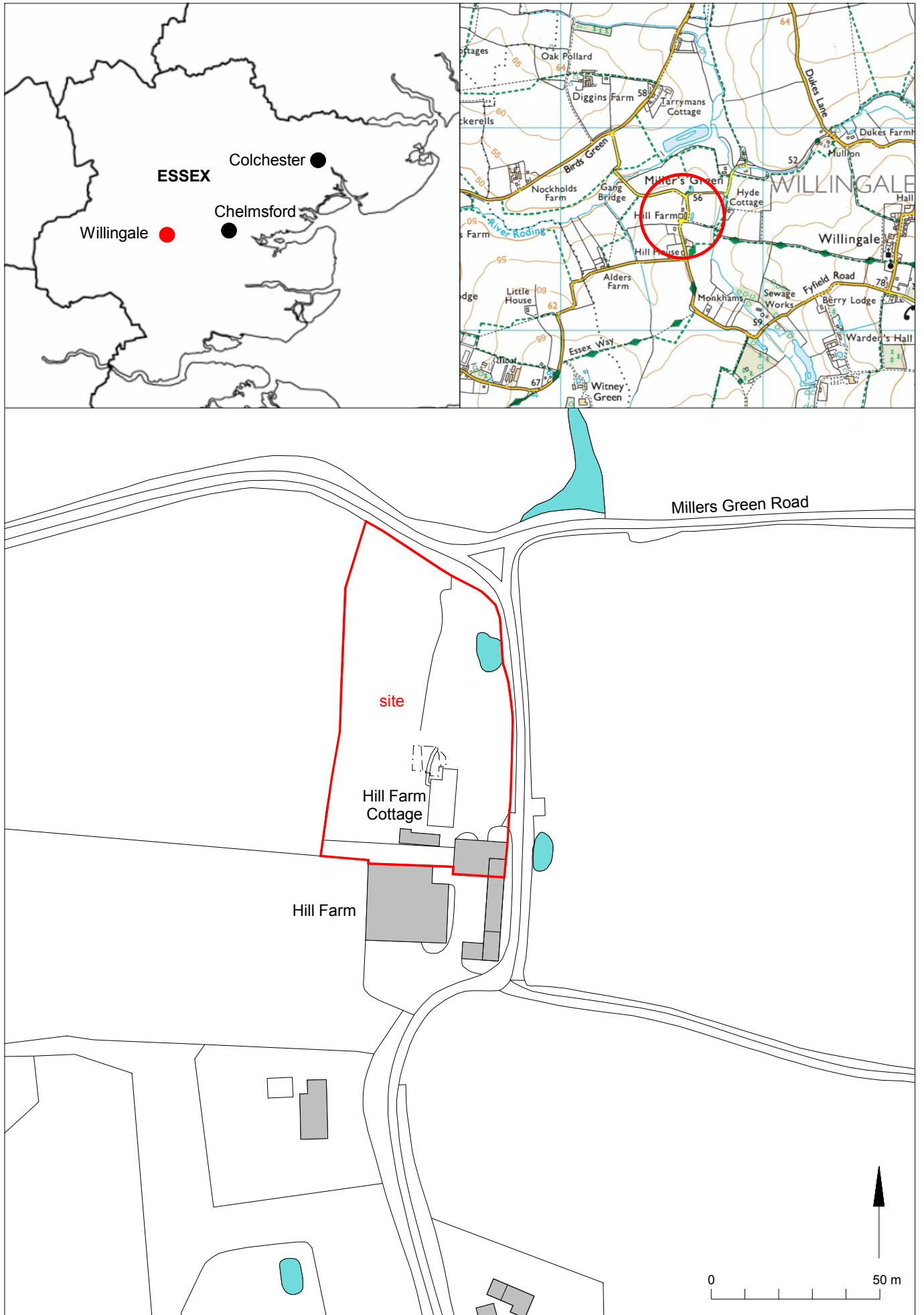


Fig 1 Site location.

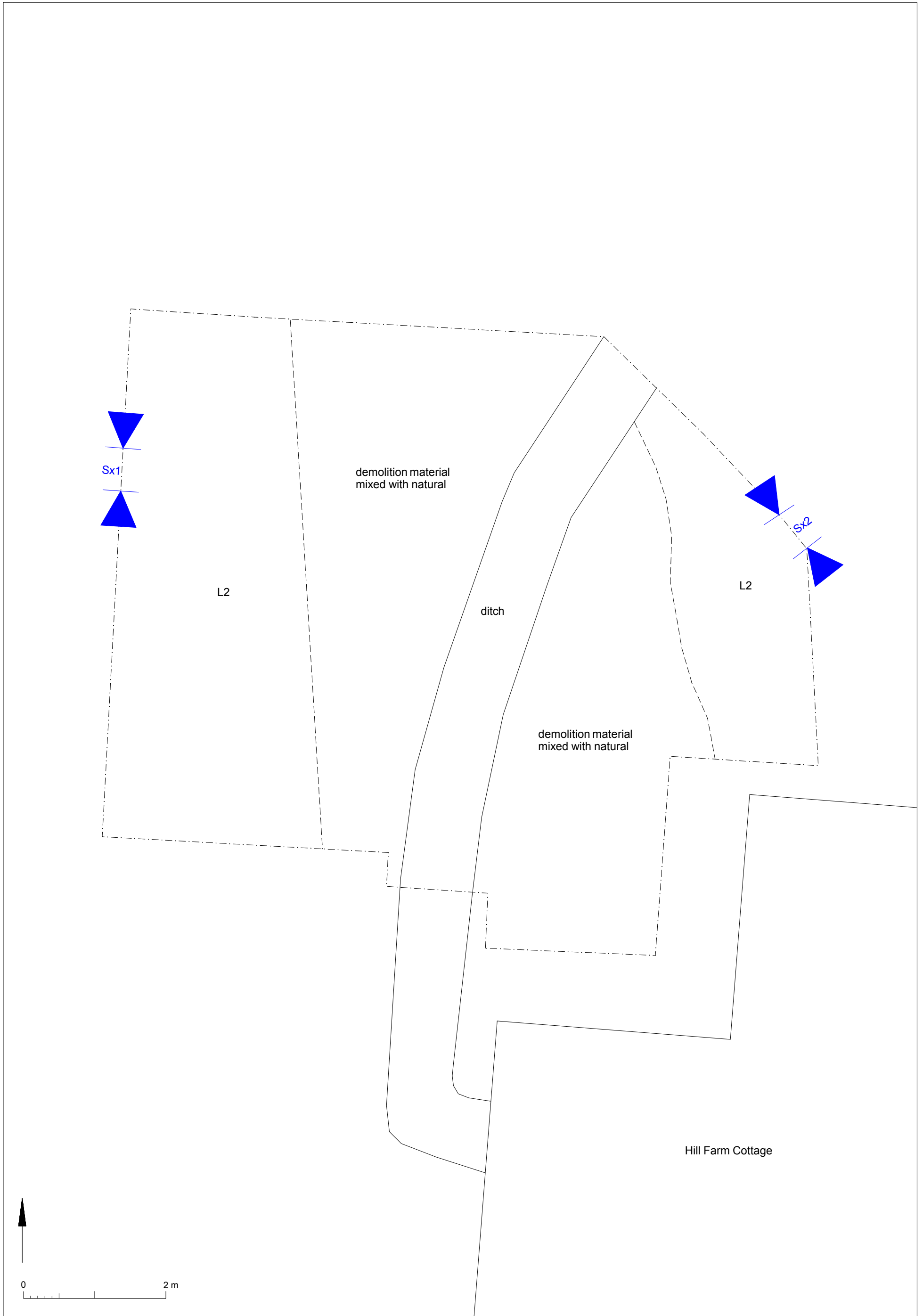
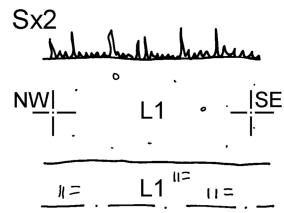
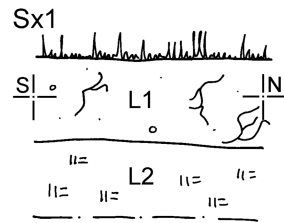


Fig 2 Results




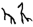
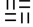
 small stones
 roots
 clay



Fig 3 Representative sections

OASIS DATA COLLECTION FORM: England

[List of Projects](#) | [Manage Projects](#) | [Search Projects](#) | [New project](#) | [Change your details](#) | [HER coverage](#) | [Change country](#) | [Log out](#)

Printable version

OASIS ID: colchest3-242610

Project details

Project name	Archaeological monitoring and recording at Hill Farm Cottage, Millers Green Road, Willingale, Essex
Short description of the project	Archaeological monitoring and recording was carried out at Hill Farm Cottage, Millers Green Lane, Willingale in advance of alterations to the Listed Building and an extension which includes a basement. Hill Farm Cottage is a Grade II listed building, and is located immediately to the west of a Roman-era findspot. A single modern ditch was uncovered.
Project dates	Start: 25-07-2017 End: 25-07-2017
Previous/future work	No / Not known
Any associated project reference codes	16/02d - Contracting Unit No.
Any associated project reference codes	EPF/2947/15 - Planning Application No.
Any associated project reference codes	EPF/2985/15/LB - Planning Application No.
Any associated project reference codes	WLHF16 - HER event no.
Any associated project reference codes	EPPMS: 2017.3 - Museum accession ID
Type of project	Recording project
Site status	Listed Building
Current Land use	Other 5 - Garden
Monument type	TIMBER-FRAMED HALL HOUSE Medieval
Monument type	DITCH Modern
Investigation type	""Watching Brief""
Prompt	Planning condition

Project location

Country	England
Site location	ESSEX EPPING FOREST WILLINGALE Hill Farm Cottage
Postcode	CM5 0PZ
Study area	0.45 Hectares
Site coordinates	TL 58605 07591 51.744051511817 0.297612213424 51 44 38 N 000 17 51 E Point

Project creators

Name of Organisation	Colchester Archaeological Trust
Project brief originator	HEM Team Officer, ECC
Project design originator	Laura Pooley
Project director/manager	Chris Lister
Project supervisor	Ben Holloway
Type of sponsor/funding body	Developer
Name of sponsor/funding body	Neil Caley / Mr & Mrs Holloway

Project archives

Physical Archive Exists?	No
Digital Archive recipient	Epping Forest Museum
Digital Archive ID	EPPMS: 2017.3
Digital Media available	"Images raster / digital photography","Survey"
Paper Archive recipient	Epping Forest Museum
Paper Archive ID	EPPMS: 2017.3
Paper Media available	"Context sheet","Drawing","Miscellaneous Material","Photograph","Report"

Project bibliography 1

Publication type	Grey literature (unpublished document/manuscript)
Title	Archaeological monitoring and recording at Hill Farm Cottage, Millers Green Road, Willingale, Essex, CM5 0PZ: July 2017
Author(s)/Editor(s)	Hicks, E.
Other bibliographic details	CAT Report 1144
Date	2017
Issuer or publisher	Colchester Archaeological Trust

Place of issue or publication	Colchester
Description	A4 loose-leaf ringbound
URL	http://cat.essex.ac.uk/
Entered by	Elliott Hicks (lp@catuk.org)
Entered on	6 September 2017

OASIS:

Please e-mail [Historic England](#) for OASIS help and advice
© ADS 1996-2012 Created by [Jo Gilham and Jen Mitcham, email](#) Last modified Wednesday 9 May 2012
Cite only: <http://www.oasis.ac.uk/form/print.cfm?id=295080> for this page