

Archaeological evaluation on land adjacent to 'Almaro', off Jack's Lane, Little Canfield, Essex, CM6 1FW

February 2017



by Laura Pooley

figures by Ben Holloway and Emma Holloway

fieldwork by Mark Baister with Gareth Morgan

on behalf of Simon Smith

NGR: TL 57513 21583 (centre)

Planning ref.: UTT/15/2657/FUL

CAT project ref.: 17/02f

ECC code: LCAM17

Saffron Walden Museum accession code SAFWM: 2017.5

OASIS ref.: colchest3-275728



Colchester Archaeological Trust

Roman Circus House,
Roman Circus Walk,
Colchester,
Essex, CO2 7GZ

tel.: 01206 501785

email: lp@catuk.org

CAT Report 1066

February 2017

Contents

1	Summary	1
2	Introduction	1
3	Archaeological background	1
4	Results	1
5	Finds	2
6	Discussion	2
7	Acknowledgements	2
8	References	2
9	Abbreviations and glossary	2
10	Contents of archive	3
11	Archive deposition	3

	Appendix 1 Context list	4
--	-------------------------	---

Figures after p4

OASIS summary sheet

List of photographs and figures

Cover: general site shot

- Fig 1 Site location
- Fig 2 Results
- Fig 3 Representative section

1 Summary

An archaeological evaluation by trial-trenching (one trial-trench) was carried out on land adjacent to 'Almaro', off Jack's Lane, Little Canfield, Essex in advance of the construction of a new detached dwelling. Despite being located 100-300m to the south/southeast of known prehistoric activity and a medieval (12th-13th century) multi-phased field system and settlement, there were no significant archaeological remains.

2 Introduction (Fig 1)

This is the archive report for an archaeological evaluation by trial-trenching on land adjacent to 'Almaro', off Jack's Lane, Little Canfield, Essex which was carried out on 10th February 2017. The work was commissioned by Simon Smith in advance of the construction of a new detached dwelling, and was undertaken by Colchester Archaeological Trust (CAT).

In response to consultation with Essex County Council Place Services (ECCPS), Historic Environment Advisor Richard Havis advised that in order to establish the archaeological implications of this application, the applicant should be required to commission a scheme of archaeological investigation in accordance with the *National Planning Policy Framework* (DCLG 2012).

All archaeological work was carried out in accordance with a written scheme of investigation (wsi) prepared by CAT and approved by ECCHEA (CAT 2017).

In addition to the brief and WSI, all fieldwork and reporting was done in accordance with English Heritage's *Management of Research Projects in the Historic Environment (MoRPHE)* (English Heritage 2006), and with *Standards for field archaeology in the East of England* (EAA 14 and 24). This report mirrors standards and practices contained in the Institute for Archaeologists' *Standard and guidance for archaeological field evaluation* (ClfA 2014a) and *Standard and guidance for the collection, documentation, conservation and research of archaeological materials* (ClfA 2014b).

3 Archaeological background

The following archaeological background utilises the Essex Historic Environment Record (EHER) held at Essex County Council, County Hall, Chelmsford.

The EHER shows that the proposed development site lies adjacent to an area in which multi-period archaeological deposits have been identified. Investigations during the development of Priors Green (EHER 46298; ECC FAU 2010) revealed prehistoric evidence beginning in the Early Neolithic and continuing in the Middle Bronze Age through to the Early Iron Age when a series of waterholes/quarry pits was dug. By the medieval period (12th-13th century) a multi-phased field system and settlement had been constructed. A small post-built structure and pond located within a probable stock enclosure was probably associated with properties fronting onto nearby Jack's Lane. Jacks Lane has been identified as probably dating back to the 13th century with evidence of small settlements on the edge of it. The present development fronts onto the lane.

4 Results (Figs 2-4)

One trial-trench was located to the north of the proposed dwelling. It was machine excavated under the supervision of a CAT archaeologist and measured 10m long by 1.8m wide.

Three layers were identified. Modern crush and build-up (L1, c 370-450mm thick, containing modern building waste) sealed a clayey-silt subsoil (L2, c 120-160mm thick) which sealed natural clay (L3).

Two small pits/postholes (F1-F2) cut L2 and were sealed by L1. Both contained modern brick and asbestos sheeting and were not excavated.

5 Finds

There were no archaeological finds.

6 Discussion

Despite being located 100-300m to the south/southeast of known prehistoric activity and a medieval (12th-13th century) multi-phased field system and settlement, there were no significant archaeological remains present within the evaluation trench.

7 Acknowledgements

CAT thanks Simon Smith for commissioning and funding the work. The project was managed by C Lister, fieldwork was carried out by M Baister and G Morgan. Figures are by B Holloway and E Holloway. The project was monitored for ECCPS by Richard Havis.

8 References

Note: all CAT reports, except for DBAs, are available online in PDF format at <http://cat.essex.ac.uk>

CAT	2014	<i>Health & Safety Policy</i>
CAT	2016	<i>Written Scheme of Investigation (WSI) for an archaeological evaluation on land adjacent to 'Almaro', off Jack's Lane, Little Canfield, Essex, CM6 1FW</i>
ClfA	2014a	<i>Standard and Guidance for an archaeological evaluation</i>
ClfA	2014b	<i>Standard and guidance for the collection, documentation, conservation and research of archaeological materials</i>
DCLG	2012	<i>National Planning Policy Framework</i>
ECC FAU	2009	<i>Priors Green (Phase 3), Takeley, Essex: Archaeological evaluation and excavation assessment</i>
English Heritage	2006	<i>Management of Research Projects in the Historic Environment (MoRPHE)</i>
Gurney, D	2003	<i>Standards for field archaeology in the East of England. East Anglian Archaeology Occasional Papers 14 (EAA 14).</i>
Medlycott, M	2011	<i>Research and archaeology revisited: A revised framework for the East of England. East Anglian Archaeology Occasional Papers 24 (EAA 24)</i>

9 Abbreviations and glossary

Bronze Age	period from c 2500 – 700 BC
CAT	Colchester Archaeological Trust
ClfA	Chartered Institute for Archaeologists
context	specific location of finds on an archaeological site
ECCPS	Essex County Council Place Services
EHHER	Essex Historic Environment Record
feature (F)	an identifiable thing like a pit, a wall, a drain: can contain 'contexts'
Iron Age	period from 700 BC to Roman invasion of AD 43
layer (L)	distinct or distinguishable deposit (layer) of material
medieval	period from AD 1066 to c 1500
modern	period from c AD 1800 to the present
natural	geological deposit undisturbed by human activity
Neolithic	period from c 4000 – 2500 BC
NGR	National Grid Reference

prehistoric	pre-Roman
post-medieval	from c AD 1500 to c 1800
residual	something out of its original context, eg a Roman coin in a modern pit
section	(abbreviation sx or Sx) vertical slice through feature/s or layer/s
wsj	written scheme of investigation

10 Contents of archive

Finds: n/a

Paper and digital record

One A4 document wallet containing:

The report (CAT Report 1066)

CAT written scheme of investigation

Original site record (feature and layer sheets, finds record, plans)

Site digital photos and log, architectural plans, attendance register

11 Archive deposition

The paper and digital archive is currently held by the Colchester Archaeological Trust at Roman Circus House, Roman Circus Walk, Colchester, Essex CO2 7GZ, but will be permanently deposited with Saffron Walden Museum under accession code SAFWM: 2017.5

© Colchester Archaeological Trust 2017

Distribution list:

Simon Smith

ECC Place Services Historic Environment Advisor

Essex Historic Environment Record, Essex County Council



Colchester Archaeological Trust

Roman Circus House,

Roman Circus Walk,

Colchester,

Essex, CO2 7GZ

tel.: 01206 501785

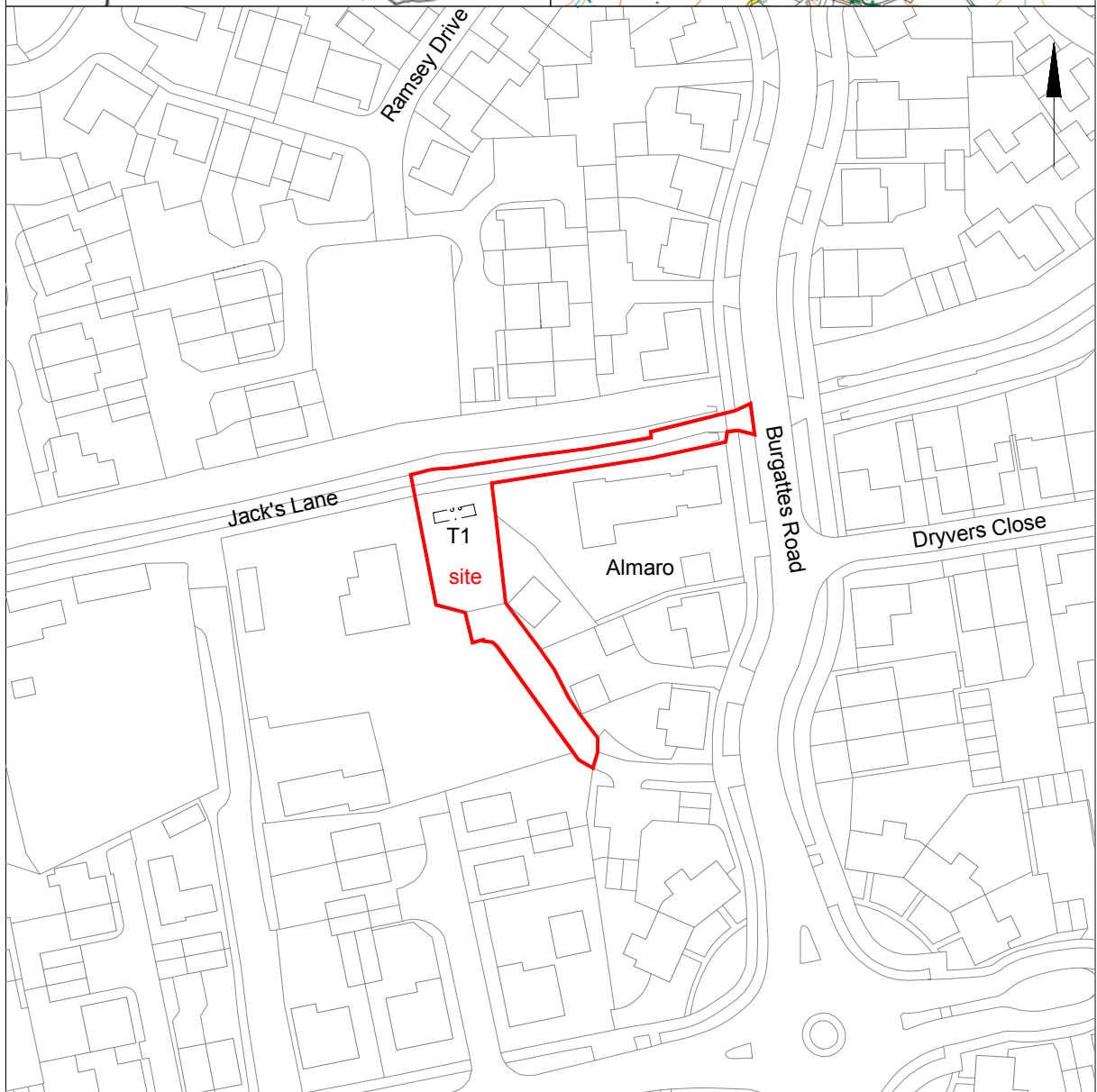
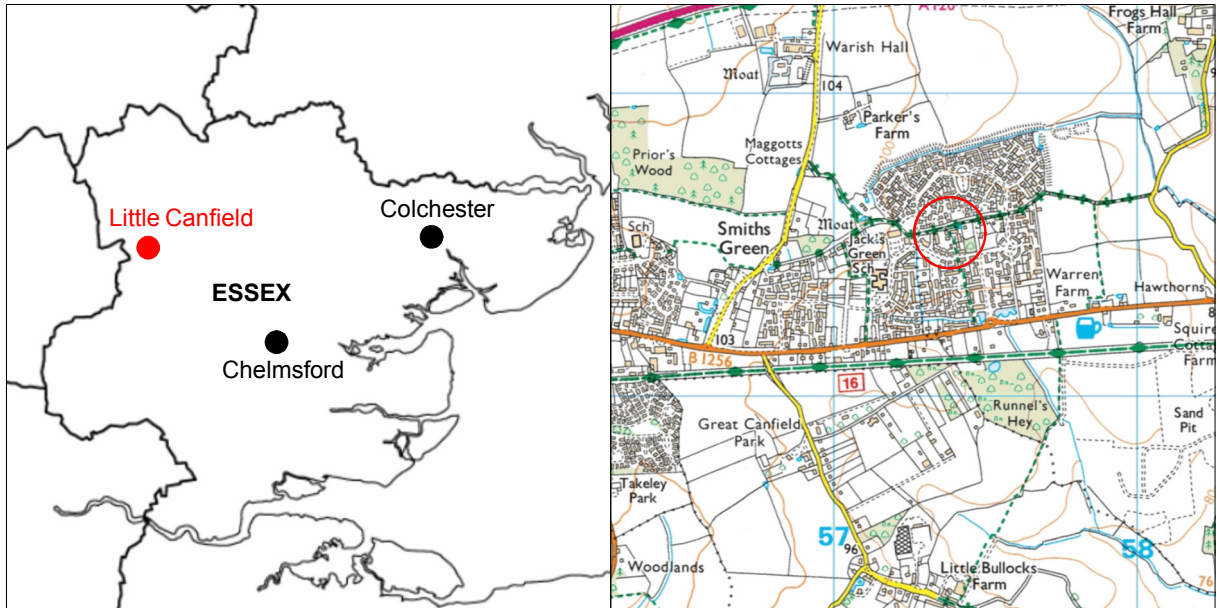
email: lp@catuk.org

Checked by: Philip Crummy

Date: 15.2.2017

Appendix 1 Context list

Context number	Context type	Description	Date
F1-F2	Small pits/postholes	Friable, dry, medium brown clayey-silt containing modern brick and asbestos sheeting	Modern
L1	Crush and build-up	Soft, dry, dark black sandy-silt containing modern brick, glass, kerbstones, 2% gravel	Modern
L2	Subsoil	Friable, dry, medium-dark brown clayey-silt	-
L3	Natural	Natural clay	-



© Crown copyright. All rights reserved. Licence number 100039294.

Fig 1 Site location.



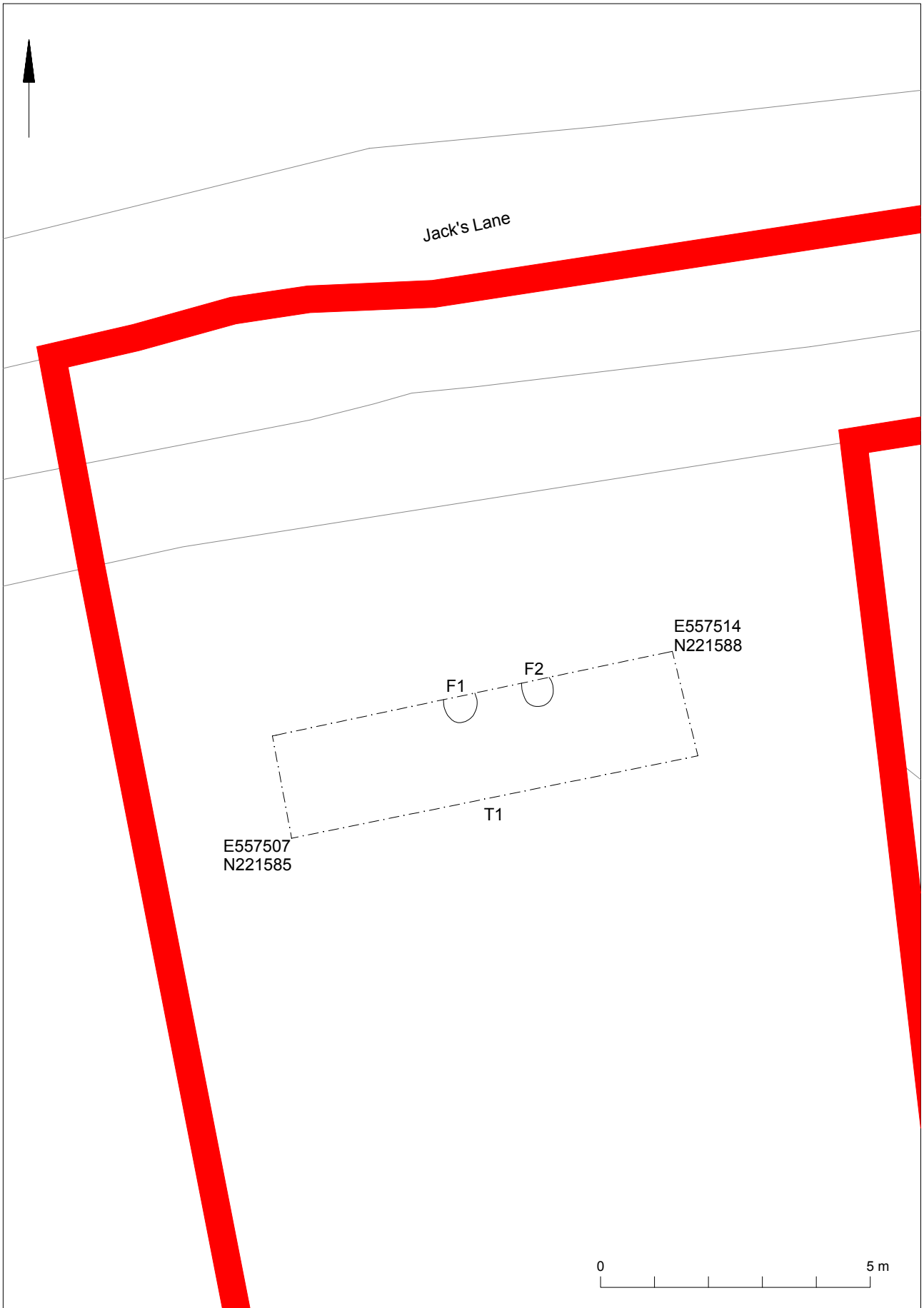


Fig 2 Results

© Crown copyright. All rights reserved. Licence number 100039294.

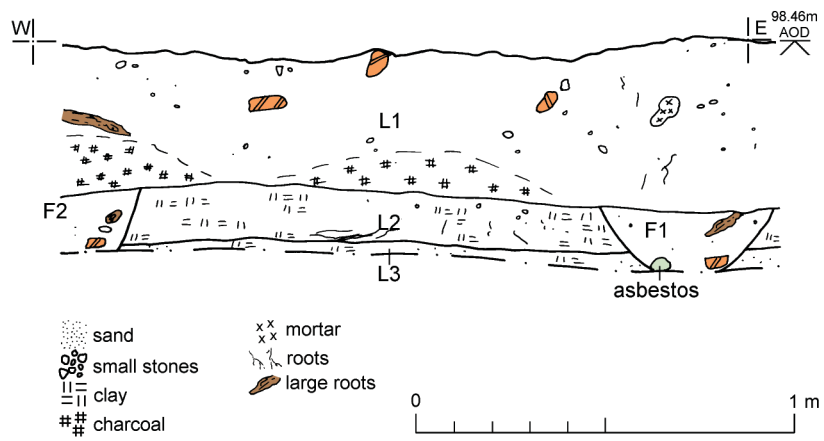


Fig 3 Representative section.

OASIS DATA COLLECTION FORM: England

[List of Projects](#) | [Manage Projects](#) | [Search Projects](#) | [New project](#) | [Change your details](#) | [HER coverage](#) | [Change country](#) | [Log out](#)

Printable version

OASIS ID: colchest3-275728

Project details

Project name	Archaeological evaluation on land adjacent to 'Almaro', off Jack's Lane, Little Canfield, Essex, CM6 1FW
Short description of the project	An archaeological evaluation by trial-trenching (one trial-trench) was carried out on land adjacent to 'Almaro', off Jack's Lane, Little Canfield, Essex in advance of the construction of a new detached dwelling. Despite being located 100-300m to the south/southeast of known prehistoric activity and a medieval (12th-13th century) multi-phased field system and settlement, there were no significant archaeological remains.
Project dates	Start: 10-02-2017 End: 10-02-2017
Previous/future work	No / Not known
Any associated project reference codes	17/02f - Contracting Unit No.
Any associated project reference codes	UTT/15/2567/FUL - Planning Application No.
Any associated project reference codes	SAFWM: 2017.5 - Museum accession ID
Any associated project reference codes	LCAM17 - HER event no.
Type of project	Field evaluation
Site status	None
Current Land use	Vacant Land 2 - Vacant land not previously developed
Monument type	PITS Modern
Significant Finds	N/A None
Methods & techniques	""Sample Trenches""
Development type	Urban residential (e.g. flats, houses, etc.)
Prompt	Planning condition
Position in the planning process	After full determination (eg. As a condition)

Project location

Country	England
Site location	ESSEX UTTLESFORD LITTLE CANFIELD land adjacent to 'Almaro', off Jack's Lane
Postcode	CM6 1FW

Study area	0.08 Hectares
Site coordinates	TL 57513 21583 51.870076467171 0.288166574322 51 52 12 N 000 17 17 E Point
Height OD / Depth	Min: 98.12m Max: 98.16m

Project creators

Name of Organisation	Colchester Archaeological Trust
Project brief originator	none
Project design originator	Laura Pooley
Project director/manager	Chris Lister
Project supervisor	Mark Baister
Type of sponsor/funding body	Owner

Project archives

Physical Archive Exists?	No
Digital Archive recipient	Saffron Walden Museum
Digital Archive ID	SAFWM: 2017.5
Digital Contents	"none"
Digital Media available	"Images raster / digital photography", "Survey"
Paper Archive recipient	Saffron Walden Museum
Paper Archive ID	SAFWM: 2017.5
Paper Contents	"none"
Paper Media available	"Context sheet", "Miscellaneous Material", "Photograph", "Plan", "Report", "Section"

Project bibliography 1

Publication type	Grey literature (unpublished document/manuscript)
Title	Archaeological evaluation on land adjacent to 'Almaro', off Jack's Lane, Little Canfield, Essex, CM6 1FW: February 2017
Author(s)/Editor(s)	Pooley, L.
Other bibliographic details	CAT Report 1066
Date	2017
Issuer or publisher	Colchester Archaeological Trust
Place of issue or publication	Colchester
Description	A4 ringbound loose leaf
URL	http://cat.essex.ac.uk/all-reports.html

Entered by Laura Pooley (lp@catuk.org)

Entered on 15 February 2017

OASIS:

Please e-mail [Historic England](#) for OASIS help and advice

© ADS 1996-2012 Created by [Jo Gilham and Jen Mitcham](#), [email](#) Last modified Wednesday 9 May 2012

Cite only: <http://www.oasis.ac.uk/form/print.cfm?id=276362> for this page