

**An archaeological watching brief at  
St Helena School car-park,  
Sheepen Road, Colchester, Essex  
July-August 2007**

**report prepared by  
Kate Orr**

**commissioned by  
Atkins Design and Engineering Solutions  
on behalf of St Helena School**

NGR: TL 98987 25786 (c)  
CAT project ref.: 07/7b  
Colchester and Ipswich Museums accession code: 2007.77



**Colchester Archaeological Trust**  
12 Lexden Road,  
Colchester,  
Essex CO3 3NF

*tel.:* (01206) 541051  
(01206) 500124  
*email:* [archaeologists@catuk.org](mailto:archaeologists@catuk.org)

**CAT Report 451**  
December 2007

## **Contents**

1	Summary	1
2	Introduction	1
3	Archaeological background	1
4	Aim	2
5	Methods	2
6	Results	2
7	Discussion	2
8	Archive deposition	3
9	Acknowledgements	3
10	References	3
11	Glossary	3

Figures after p 4

EHER summary sheet

## **List of figures**

Fig 1 Plan of car-park, showing areas monitored by the watching brief.



## 1 Summary

A watching brief was carried out on groundworks to reconstruct the car-park on the eastern side of the school grounds. This involved removing the old tarmac surface, creating a new path and cycle storage compound, and digging trenches for lighting cables. The groundworks largely only affected modern and post-medieval layers and therefore did not expose any archaeological features. In one lighting-cable trench, the Roman ground-surface was exposed but no archaeological features were observed.

## 2 Introduction (Fig 1)

- 2.1 This is the report on an archaeological watching brief in the car-park of St Helena School, Sheepen Road, Colchester, Essex. The site is within the scheduled ancient monument area of Camulodunum (Essex SAM no 46). The school applied for scheduled ancient monument consent to reconstruct the car-park to create a new footpath, cycle storage compound and lighting. After an archaeological evaluation was carried out earlier this year (CAT Report 414), English Heritage advised the Secretary of State that an archaeological watching brief should take place.
- 2.2 St Helena School is located approximately 1.5km to the north-west of Colchester town centre. The car-park occupies a fairly level block of land on the east side of the school grounds at 7.2m-7.8m AOD. The site is bounded by another property, and the school buildings and playing field. It is centred on NGR TL 98987 25786.
- 2.3 The watching brief was carried out by the Colchester Archaeological Trust (CAT) between July and August 2007. It was commissioned by Atkins Design and Engineering Solutions on behalf of St Helena School. All work was carried out according to a Written Scheme of Investigation (WSI) agreed with Martin Winter of Colchester Borough Council.
- 2.4 This report follows the standards set out in the Borough Council's *Guidelines on standards and practices for archaeological fieldwork in the Borough of Colchester* (CM 2002) and *Guidelines on the preparation and transfer of archaeological archives to Colchester Museums* (CM 2003), and the Institute of Field Archaeologists' *Standard and guidance for an archaeological watching brief* (IFA 1999) and *Standard and guidance for the collection, documentation, conservation and research of archaeological materials* (IFA 2001). The guidance contained in the documents *Management of Research Projects in the Historic Environment* (MoRPHE), and *Research and archaeology: a framework for the Eastern Counties 1. Resource assessment* (EAA 3), *Research and archaeology: a framework for the Eastern Counties 2. Research agenda and strategy* (EAA 8), and *Standards for field archaeology in the East of England* (EAA 14) was also followed.

## 3 Archaeological background

- 3.1 The site lies on the northern side of the site of the important Late Iron Age and 1st-century Roman settlement known as Sheepen (Essex SAM no 46). Extensive excavations there in the 1930s and in 1970 and later have produced evidence of workshops engaged in a range of industrial activities including metal-working, enamelling, pottery- and tile-making and leather-working, enclosed within fenced compounds (Hawkes & Hull 1947; Niblett 1985). Sheepen was a major commercial centre, situated by the River Colne and receiving goods from the Continent. Large quantities of 1st-century imported Roman amphoras have been found at the Colchester Institute nearby (CAR 11, 73-77; CAT Report 131).
- 3.2 A late 1st-century temple was excavated by the Colchester Excavation Committee in 1935 on the site of St Helena School (Hull 1958, 224-34). The foundation of the outer *temenos* wall of the temple precinct appears to lie underneath Sheepen Road.
- 3.3 In November 2005, an archaeological evaluation by three test-pits was carried out at the drama block of St Helena School. This recorded several features including a ditch and a possible post-hole. Associated pottery suggested a date in the 1st century AD for the features (CAT Report 351).

- 3.4** An archaeological excavation and monitoring was subsequently carried out during the excavation of footings for the extension to the drama block in June 2006. The investigation revealed pits, ditches and a gully all dating from AD 5-60, sealed beneath 600 to 750mm of topsoil. The type of pottery and the presence of animal bone, slag, daub and Roman tile suggest domestic and industrial use similar to that identified as a result of the previous investigations at Sheepen (CAT Report 384).
- 3.5** In February 2007, an evaluation by trial-trenching was carried out in the car-park on the eastern side of St Helena School. Several Roman features were revealed including a foundation of the 1st-century temple located on the site (CAT Report 414).

## **4 Aim**

The aim of the watching brief was to identify and record any surviving archaeological deposits that might be disturbed during the groundworks.

## **5 Methods (Fig 2)**

- 5.1** An archaeologist from CAT made visits during the contractor's groundworks to carry out a watching brief. Groundworks consisted of stripping off turf and topsoil in soft areas, stripping tarmac and sub-base in car-parking areas, creating a base for a cycle storage compound, stripping topsoil for a new path, and digging trenches for lighting cables. Eleven visits were made in total.
- 5.2** All the groundworks were carried out by contractors using a mechanical excavator. A toothless bucket was mainly used, except for where tarmac and sub-base and concrete foundations were being removed.
- 5.3** Potential archaeological deposits which were exposed were cleaned by hand.

## **6 Results (Fig 2)**

- 6.1** Four visits were made while contractors were stripping off the previous car-park surface and sub-base down to a depth of approximately 300mm. Turf and topsoil areas at the edge of the car-park were also stripped down to a depth of 300mm. Nothing other than modern deposits were recorded during this phase.
- 6.2** Five visits were made during the digging of trenches for lighting cables. The trenches were approximately 400mm deep (below the reduced ground-level) and did not disturb any archaeological deposits. During this phase, the concrete slab for the cycle storage compound was constructed. Part of this area had previously housed a greenhouse and the groundworks did not extend deeper than the foundations of this structure.
- 6.3** Two visits were made during works to create a path around the eastern and northern perimeter of the site. This involved the removal of turf and topsoil. This ground-reduction did not extend deeper than the topsoil. Trenches were dug on either side of the path for lighting cables. These trenches were 600-700mm deep and were mainly dug through topsoil. Some of the deeper trenches did expose a light yellowish brown silty layer which is the Roman ground-surface. No features were exposed.

## **7 Discussion**

The groundworks for the reconstruction of the car-park largely only affected modern and post-medieval layers and therefore did not expose any archaeological features. In one lighting-cable trench, the Roman ground-surface was exposed but no archaeological features were discerned.

## 8 Archive deposition

The archive, including the site records, will be permanently deposited with Colchester and Ipswich Museums under accession code COLEM 2007.77.

## 9 Acknowledgements

CAT is grateful to Atkins Design and Engineering Solutions for commissioning the work and to St Helena School for funding it. Site work was carried out by K Orr. The project was monitored by Martin Winter of Colchester Borough Council and Pat Connell, Essex County Council Historic Environment Management team officer.

## 10 References

- |                            |      |                                                                                                                                                                                                       |
|----------------------------|------|-------------------------------------------------------------------------------------------------------------------------------------------------------------------------------------------------------|
| CAR 11                     | 1995 | <i>Colchester Archaeological Report 11: Camulodunum 2</i> , by C F C Hawkes & P Crummy                                                                                                                |
| CAT Report 131             |      | <i>An archaeological watching brief at Colchester Institute, Colchester, Essex, January-March 2001</i> , unpublished CAT archive report, by Kate Orr, 2001                                            |
| CAT Report 351             |      | <i>An archaeological evaluation of St Helena School drama block, Sheepen Road, Colchester, Essex, November 2005</i> , unpublished CAT archive report, by Kate Orr, 2005                               |
| CAT Report 384             |      | <i>An archaeological excavation and monitoring of footings at the drama block of St Helena School, Sheepen Road, Colchester, Essex, June 2006</i> , unpublished CAT archive report, by Kate Orr, 2006 |
| CAT Report 414             |      | <i>An archaeological evaluation at St Helena School, February 2007</i> , by Laura Pooley, 2007                                                                                                        |
| CM                         | 2002 | <i>Guidelines on standards and practices for archaeological fieldwork in the Borough of Colchester</i>                                                                                                |
| CM                         | 2003 | <i>Guidelines on the preparation and transfer of archaeological archives to Colchester Museums</i>                                                                                                    |
| EAA 3                      | 1997 | <i>Research and archaeology: a framework for the Eastern Counties 1. Resource assessment</i> , East Anglian Archaeology, Occasional Papers, <b>3</b> , ed by J Glazebrook                             |
| EAA 8                      | 2000 | <i>Research and archaeology: a framework for the Eastern Counties 2. Research agenda and strategy</i> , East Anglian Archaeology, Occasional Papers, <b>8</b> , ed by N Brown & J Glazebrook          |
| EAA 14                     | 2003 | <i>Standards for field archaeology in the East of England</i> , East Anglian Archaeology, Occasional Papers, <b>14</b> , ed by D Gurney                                                               |
| Hawkes, C F C, & Hull, M R | 1947 | <i>Camulodunum, first report on the excavations at Colchester 1930-1939</i> , RRCSAL, <b>14</b>                                                                                                       |
| Hull, M R                  | 1958 | <i>Roman Colchester</i> , RRCSAL, <b>20</b>                                                                                                                                                           |
| IFA                        | 1999 | <i>Standard and guidance for an archaeological watching brief</i>                                                                                                                                     |
| IFA                        | 2001 | <i>Standard and guidance for the collection, documentation, conservation and research of archaeological materials</i>                                                                                 |
| MoRPHE                     | 2006 | <i>Management of research projects in the historic environment</i> (English Heritage)                                                                                                                 |
| Niblett, R                 | 1985 | <i>Sheepen: an early Roman industrial site at Camulodunum</i> , CBA, Research Report, <b>57</b>                                                                                                       |

## 11 Glossary

AOD	above Ordnance Survey datum point (at Newlyn sea level)
CM	Colchester and Ipswich Museums
context	specific location on an archaeological site, especially one where finds are made, usually a layer or a feature
EHHER	Essex Historic Environment Record, held by Essex County Council
feature	an identifiable thing like a pit, a wall, a drain, a floor
HEM	Historic Environment Management team, Essex County Council
IFA	Institute of Field Archaeologists

modern	period from c 1850 onwards to the present
natural	geological deposit undisturbed by human activity
NGR	National Grid Reference
post-medieval	period from c 1500 to c 1850
Roman	the period from AD 43 to AD 410
RRCSAL	Report of the Research Committee of the Society of Antiquaries of London
UAD	Urban Archaeological Database, held by Colchester and Ipswich Museums
U/S	unstratified, ie no context

© Colchester Archaeological Trust 2007

**Distribution list:**

Atkins Design and Engineering Solutions  
Deborah Priddy, English Heritage Ancient Monuments Inspector  
Patrick Connell, Essex County Council Historic Environment Management team officer  
Martin Winter, Colchester Borough Council  
Essex Historic Environment Record, Essex County Council



**Colchester Archaeological Trust**

12 Lexden Road,  
Colchester,  
Essex CO3 3NF

tel.: (01206) 541051  
(01206) 500124  
email: [archaeologists@catuk.org](mailto:archaeologists@catuk.org)

checked by: Philip Crummy  
date: 21.12.07

Adamsx c:/reports07/st helena car-park/report451.doc

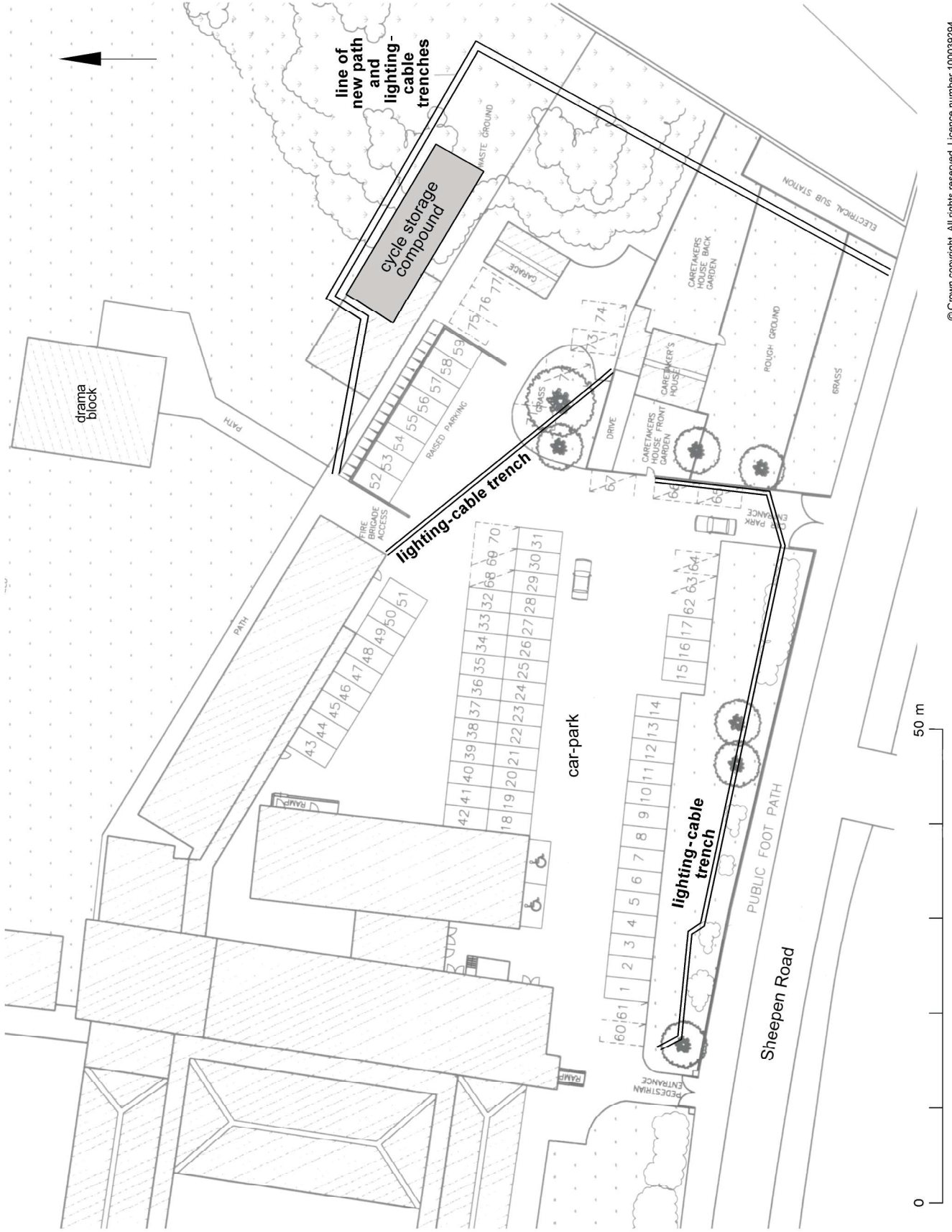


Fig 1 Plan of car-park, showing areas monitored by the watching brief.

**Essex Historic Environment Record/  
Essex Archaeology and History**

**Summary sheet**

<b>Site address:</b> St Helena School car-park, Sheepen Road, Colchester, Essex	
<b>Parish:</b> Colchester	<b>District:</b> Colchester Borough
<b>NGR:</b> TL 98987 25786 (c)	<b>Site code:</b> Museum accession code 2007.77
<b>Type of work:</b> Watching brief	<b>Site director/group:</b> Colchester Archaeological Trust
<b>Date of work:</b> July-August 2007	<b>Size of area investigated:</b> car-park area = approx 60m x 50m
<b>Location of finds/curating museum:</b> Colchester and Ipswich Museums	<b>Funding source:</b> St Helena School
<b>Further seasons anticipated?</b> No	<b>Related UAD nos:</b> -
<b>Final report:</b> CAT Report 451 and summary in <i>EAH</i>	
<b>Periods represented:</b> Roman, post-medieval and modern	
<p><b>Summary of fieldwork results:</b>  <i>A watching brief was carried out on groundworks to reconstruct the car-park on the eastern side of the school grounds. This involved removing the old tarmac surface, creating a new path and cycle storage compound, and digging trenches for lighting cables. The groundworks largely only affected modern and post-medieval layers and therefore did not expose any archaeological features. In one lighting-cable trench, the Roman ground-surface was exposed but no archaeological features were observed.</i></p>	
<b>Previous summaries/reports:</b> CAT Reports 351, 384 and 414	
<b>Author of summary:</b> Kate Orr	<b>Date of summary:</b> December 2007

**Written Scheme of Investigation**  
**For Archaeological Attendance and Recording**  
**(a Watching Brief) at**  
**St Helena School car-park, Sheepen Road, Colchester, Essex**

June 2007



COLCHESTER ARCHAEOLOGICAL TRUST,  
12 LEXDEN ROAD,  
COLCHESTER,  
ESSEX C03 3NF  
*tel/fax: (01206) 500124*  
*email: [archaeologists@catuk.org](mailto:archaeologists@catuk.org)*

## **1 Introduction**

- 1.1 This is a Written Scheme of Investigation (WSI) for an archaeological watching brief in the car-park of St Helena School, Sheepen Road, Colchester, Essex. The school is to reconstruct the car-park and to create a new footpath, cycle storage and lighting. The site is within the scheduled ancient monument area of Camulodunum (Essex monument no. 46). After an evaluation was carried out earlier this year, English Heritage have advised the Secretary of State that an archaeological watching brief should take place.
- 1.2 The car-park occupies a level block of land on the east side of St Helena School which is located approximately 1.5km to the north-west of Colchester town centre. The site is bounded by the adjacent commercial property, the school premises and playing field and is centred on NGR TL 98987 25786.
- 1.3 This WSI sets out proposals for the watching brief which will lead to post-excavation work and the production of archive and (if necessary) publication texts
- 1.4 Any variations in this WSI will be agreed beforehand with the Colchester Borough Council Archaeology Officer (CBCAO).

## **2 Archaeological background**

- 2.1 The site lies on the eastern side of the important Late Iron Age and early Roman settlement known as Sheepen (Scheduled Ancient Monument no 46). Extensive excavations there in the 1930s and smaller-scale work in 1970 and later have produced evidence of workshops engaged in a range of industrial activities including metal-working, enamelling, pottery-making and leather-working (Hawkes & Hull 1947; Niblett 1985).
- 2.2 A late 1st-century temple was excavated by the Colchester Excavation Committee in 1935 on the site of St Helena School (Hull 1958, 224-34). The outer '*temenos*' wall of the temple precinct appears to lie underneath Sheepen Road.
- 2.3 A Roman timber-lined well was recorded in the 1930s to the south, within the grounds of Colchester Institute. A watching brief carried out at Colchester Institute in 2001 produced an assemblage of 1st-century AD Roman amphoras and mostly 1st-century AD pottery. Several pits were recorded, one of which was datable to the early Roman period. A short stretch of mortared Roman tiles, presumed to be a wall or foundation to a Roman building, was found by the contractors after the watching brief had finished (CAT Report 131).
- 2.4 In November 2005 an archaeological evaluation by three test pits was carried out at the drama block. This recorded several features including a ditch and a possible post hole. Associated pottery suggested a date in the 1st century AD for the features (CAT Report 351).



- 2.5 An archaeological excavation and monitoring was subsequently carried out of footings for the extension to the drama block in June 2006. The investigation revealed pits, ditches and a gully all dating from AD 5-60 sealed by between 600-750mm of topsoil. The type of pottery and the presence of animal bone, slag, daub and Roman tile suggest domestic and industrial use similar to that identified as a result of the previous investigations at Sheepen (CAT report 384).
- 2.6 In February 2007 an evaluation by trial trenching was carried out in the car-park. Several Roman features were revealed including a foundation of the 1st century AD temple located on the site (CAT report 414).

### **3 Aim**

The aim of the watching brief is to identify and record any surviving archaeological deposits that may be disturbed during building operations.

### **4 Watching brief methodology**

- 4.1 An archaeologist from CAT will make intermittent visits during the groundworks. Groundworks are expected to include ground reduction of the car-park surface, and trenches dug for lighting cables.
- 4.2 All the groundworks will be carried out by contractors using a mechanical excavator with a toothless ditching bucket.
- 4.3 Individual records of excavated contexts, layers, features or deposits will be entered on pro-forma record sheets. Registers will be compiled of finds, small finds and soil samples.
- 4.4 All features and layers or other significant deposits will be planned, and their profiles or sections recorded. The normal scale will be site plans at 1:20 and sections at 1:10, unless circumstances indicate that other scales would be appropriate.
- 4.5 The photographic record will consist of general site shots, and shots of all archaeological features and deposits. Standard "record" shots of contexts will be taken on a digital camera. Colour transparencies will still be used for overall site shots and *all* important contexts.
- 4.6 The environmental sampling policy is as follows. CAT has an arrangement with and Val Fryer whereby any potentially rich environmental layers or features will be appropriately sampled as a matter of course, with any processing and reporting done by VF. If advice is required Jen Heathcote at English Heritage will be consulted.
- 4.7 Should human remains be discovered, Environmental Health the client and CBCAO will be informed.
- 4.9 A metal detector will be used to check spoil heaps.

## **5 General Methodology**

- 5.1 All works will be undertaken by professional archaeologists employed by CAT. The field officer will have a level of experience appropriate to the work.
- 5.2 It is the main contractor's responsibility to check for services and cables.
- 5.3 All the latest Health and Safety guidelines will be followed on site. CAT has a standard health and safety policy, which will be adhered to (CAT 2006).
- 5.4 For purposes of deposition of the archive, a museum accession code will be obtained through Colchester Museums. All codes will be quoted in any reports arising from the work.
- 5.5 The relevant document of the Institute of Field Archaeologists (IFA) will be followed, i.e. *Standard and guidance for archaeological watching brief (1999)*, including its 'code of conduct'. The Borough Council's *Guidelines on standards and practices for archaeological fieldwork in the Borough of Colchester (1999, updated 2002)*, and *Guidelines on the preparations and transfer of archaeological archives to Colchester Museums (1996, updated 2003)* and English Heritage's *Management of Research Projects in the Historic Environment (2006)* will be adhered to throughout the course of the project. Other guidelines followed are those published in **EAA 3**, **EAA 8** and **EAA 14**.

## **6 Finds**

- 6.1 If any human remains are exposed, Environmental Health, CBCAO and the client will be notified. All human remains will be preferably left and recorded *in situ*. A Home Office license to remove the remains will be sought if this is the appropriate course of action. Due attention will be paid to Health and Safety.
- 6.2 All finds of archaeological relevance will be retained. Policies for later disposal of any finds will be agreed with CBCAO and the site owner.
- 6.3 All finds, where appropriate, will be washed.
- 6.4 A policy of marking for pottery and other finds will be agreed with Colchester Museum. Marking will include the site code and context number.
- 6.5 The site archive will be presented to Colchester Museum in accordance with their requirements
- 6.6 All finds of potential treasure will be removed to a safe place, and the coroner informed immediately, in accordance with the rules of the Treasure Act 1996. The definition of treasure is given in pages 3-5 of the Code of Practice of the above act. This refers primarily to gold or silver objects.
- 6.7 Finds work will be to accepted professional standards as presented in *Standard and guidance for the collection, documentation, conservation and research of archaeological materials (IFA 2001)*.

- 6.8 A list of specialists available for consultation is given at the end of this WSI.

## **7 Results**

- 7.1 Notification will be given to CBCAO when the fieldwork has been completed.
- 7.2 The full report, including full reports on artefacts, will be submitted to CBCAO within a length of time not exceeding 1 month from the end of fieldwork, with one copy supplied to the Essex Historic Environment Record (EHER) and Colchester Museums.
- 7.3 This report will include:
- The aims and methods adopted in the course of the watching brief.
  - A section drawing showing the depth of deposits including present ground-level.
  - The watching brief methodology and results with a suitable conclusion and discussion.
  - All specialist reports and assessments.
  - A concise non-technical summary of the project results.
- 7.4 An appropriate archive will be prepared to minimum acceptable standards outlined in *Management of research projects in the Historic Environment* (English Heritage 2006).
- 7.5 Within four weeks of the end of fieldwork CBCAO will be supplied with a summary of the project suitable for inclusion in the EHER. A summary will be supplied even if the project has a negative result.
- 7.6 If, after discussion with CBCAO, the results are considered worthy of publication, a report (at least at a summary level), will be submitted to *Essex Archaeology and History*.

## **8 Archive deposition**

- 8.1 The full archive will be deposited at Colchester Museum within 6 months of completion of final publication report on the project, and confirmed to CBCAO.
- 8.2 Finds (and other retained materials) will be bagged and boxed in the manner recommended by Colchester Museum. The storage of the archive will accord with Colchester Museum's guidelines.
- 8.3 A summary of the contents of the archive shall be supplied to CBCAO at the time of deposition at the museum.

## 9 Monitoring

- 9.1 CBCAO will be responsible for monitoring progress and standards throughout the project, and will be kept regularly informed during fieldwork, post-excavation and publication stages.
- 9.2 Notification of the start of work will be given CBCAO one week in advance of its commencement.
- 9.3 Any variations of the WSI shall be agreed with CBCAO in writing prior to them being carried out.
- 9.4 CBCAO will be notified when the fieldwork is complete.
- 9.5 The involvement of CBCAO shall be acknowledged in any report or publication generated by this project.

## 10 References

- |                                  |      |                                                                                                                                                                                                 |
|----------------------------------|------|-------------------------------------------------------------------------------------------------------------------------------------------------------------------------------------------------|
| CAT Report<br>131                | 2001 | <i>An archaeological watching brief at Colchester Institute, Colchester, Essex, January-March 2001</i> , unpublished CAT archive report, by Kate Orr                                            |
| CAT Report<br>384                | 2006 | <i>An archaeological excavation and monitoring of footings at the drama block of St Helena School, Sheepen Road, Colchester, Essex, June 2006</i> , unpublished CAT archive report, by Kate Orr |
| CAT Report<br>414                | 2007 | <i>An archaeological evaluation at St Helena School, February 2007</i> , by Laura Pooley                                                                                                        |
| Hawkes, C F<br>C, & Hull, M<br>R | 1947 | <i>Camulodunum</i> , RRCSAL, <b>14</b>                                                                                                                                                          |
| Hull, M R                        | 1958 | <i>Roman Colchester</i> , RRCSAL, <b>20</b>                                                                                                                                                     |
| Niblett, R                       | 1985 | <i>Sheepen: an early Roman industrial site at Camulodunum</i> , CBA Research Report, <b>57</b>                                                                                                  |

Kate Orr 15/06/07

© COLCHESTER ARCHAEOLOGICAL TRUST, "CAMULODUNUM",  
12 LEXDEN ROAD, COLCHESTER, ESSEX C03 3NF  
tel/fax: (01206) 500124: email: kateo@catuk.org

## **Appendix - team structure and details**

### **List of team members**

#### **Site supervision and Recording**

Kate Orr

#### **Assistants**

To be decided

#### **Finds consultants**

Stephen Benfield (CAT): Prehistoric and Roman pottery

Francesca Boghi (NAU): Human bone

Joanna Bird (Guildford): Samian ware

Ernest Black (Colchester): Roman brick/tile

Howard Brooks (CAT): Medieval and Post-Medieval pottery

Dr Hilary Cool (Nottingham): Roman glass

Nina Crummy (Colchester): Small finds

Julie Curl (NAU): Animal bone

John Davis (Norwich Museum): Roman coins

Val Fryer (UEA/Loddon): Environmental

Dr Jen Heathcote (English Heritage): Regional Science Advisor

Hazel Martingell (Braintree): Lithics

Valerie Rigby (British Museum): LIA ceramics

Dr Paul Sealey (Colchester Museums): Roman Amphoras

Patricia Ryan (Chelmsford): Medieval and later brick and tile

Sue Tyler (ECC): Saxon Pottery.

Helen Walker (ECC): Saxon, Medieval and post-medieval pottery.

#### **Graphics**

M Macdonald, and E Spurgeon

#### **Report writing**

Kate Orr

#### **Senior Site Staff**

##### **Kate Orr MA MIFA**

Kate joined CAT in May 2000 after over four years in Lincolnshire as North Kesteven Heritage Officer. She studied Archaeology and Ancient History at the University of Wales, College of Cardiff, graduating in 1994. She obtained an MA in Archaeological Heritage Management from the University of York in 1995. She now conducts field investigations and compiles desk-based assessments for CAT. Her work in Essex includes excavations at Handford House, Colchester High School and St Helenas School in Colchester and evaluations and watching briefs in Notley, Shalford and Chelmsford.

## **Finds Specialists**

### **Stephen Benfield BA, Cert Archaeol (Oxon) (CAT) Prehistoric and Roman pottery**

Steve's first involvement with Colchester archaeology was in 1985, working on a Manpower Services Commission sponsored project to assist in processing the enormous collection of Roman pottery from excavations in the town. He graduated from Reading University with a degree in archaeology and subsequently studied for his post-graduate Certificate in Archaeology at Oxford. Returning to CAT, he has since worked on many CAT projects at various supervisory and directorial positions, including the major projects at Stanway Iron Age burial site and Gosbecks Roman temple/theatre complex. Stephen has also, through much hands-on experience, built up a considerable working knowledge of LIA and Roman ceramics. He now completes ceramic assessments and full reports for CAT, drawing on the unrivalled catalogues provided by the standard Colchester works *Camulodunum* (Hawkes & Hull 1947), *Roman Colchester* (Hull 1958) and now *CAR 10*, and by examining the fabric series held at CAT headquarters.

### **Francesca Boghi MSc (Norfolk Archaeological Unit) Human bone**

Francesca has been the Norfolk Archaeological Unit's human bone specialist since 1998. Her previous experience includes work for the Calvin Wells laboratory at the University of Bradford, where she undertook the analysis of 79 skeletons from the medieval cemetery of Pennell Street, Lincoln, Lincolnshire and of a group of Romano-British cremations from Kempston, Bedfordshire. Since joining Norfolk Archaeological Unit she has analysed the medieval assemblage from the parish church of Brettenham, Norfolk (89 skeletons), the human remains from Norwich Whitefriars (thirty-three skeletons from the Carmelite Friary and thirty-seven from the Baptist Chapel of Friary Yard), the skeletal remains from a medieval well in Norwich and numerous other smaller assemblages of inhumations and cremated human remains from the county. In addition she contributes to local education programmes by providing short sessions on skeletal analysis and interpretation. Her professional qualification is an MSc from the University of Sheffield and Bradford in Osteology, Paleopathology and Funerary Archaeology. She is a member of the British Association of Biological Anthropologists and Osteoarchaeologists (BBAO).

### **Joanna Bird FSA (Guildford) Samian**

Joanna is one of the country's top samian specialists. Among her large corpus of work is a contribution to the publication *Colchester Archaeological Report 10: Roman pottery from excavations in Colchester 1971-1986*.

### **Ernest Black (Colchester) Roman brick/tile**

Ernest is a Colchester schoolteacher with a wide interest in archaeology and the classical world. In this sense, he is following in the footsteps of A.F. Hall, and Mike Corbishley who were also local schoolmasters. He has developed his

specialism by large scale hands-on experience with Roman brick and tile, and has contributed to the *Arch J*, *CAR 6: Excavations at Culver Street, the Gilbert School, and other sites in Colchester 1971-1985*.

**Howard Brooks BA, MIFA (CAT) Medieval and Post-Medieval pottery**

Howard's involvement in Essex archaeology goes back to 1970 when he dug at Sheepen, Colchester with Rosalind Dunnett (now Niblett). He studied archaeology at the University of Wales, and graduated in 1975. He worked for Colchester Archaeological Trust between 1976 and 1981, and again in 1985, where he was involved at various levels of responsibility (up to Co-Director) in the excavation of deeply stratified urban remains in Roman Colchester and suburbs (*Colchester Archaeological Report 3* [1994]). Between 1992 and 1995 he worked for Essex County Archaeology Section, first in directing the fieldwalking and excavation project at Stansted Airport (*East Anglian Archaeology 107*, 2004), and then in Development Control. Howard then left ECC to set up and run HBAS, the county's smallest contracting team, in which capacity he carried out over twenty field projects and wrote a dozen consultancy reports. He rejoined CAT in 1997. He regularly contributes to *Essex Archaeology & History*, and teaches University evening classes on archaeology.

**Dr Hilary Cool FSA MIFA (Nottingham) Roman glass**

Yet another graduate of the University of Wales, Hilary is now a freelance glass and finds specialist, and has written many reports on glass from Colchester sites, including contributions to *Colchester Archaeological Report 6: Excavations at Culver Street, the Gilbert School, and other sites in Colchester 1971-85*, and *Colchester Archaeological Report 9: Excavations on Roman and later cemeteries, churches and monastic sites in Colchester 1971-88* (1993). Among her major works is the internationally selling *Colchester Archaeological Report 8: Roman vessel glass from excavations in Colchester 1971-85*.

**Nina Crummy (Colchester) Small finds**

Nina first worked in the early 1970s as finds assistant on the major urban excavations in Colchester for the Colchester Excavation Committee (later the Trust). Over the next twenty years she built up an unrivalled working knowledge of small finds of all types. She has collaborated in most of the *Colchester Archaeological Reports*, and was principal author of the best-selling *Colchester Archaeological Reports 2* (Roman small finds), 4 (*The coins from excavations in Colchester 1971-9*) and 5 (*The post-Roman small finds from excavations in Colchester 1971-85*). She recently worked for the Museum of London, and was instrumental in the recent transfer of and the massive improvement in accessibility to archaeological archives in London. She now works freelance on small finds reports for CAT, HBAS, and other bodies including Winchester Excavation Committee.

### **Julie Curl (Norfolk Archaeological Unit) Animal Bone**

Julie has over 16 years of experience in archaeology and in particular finds for the Norfolk Archaeological Unit and Norfolk Museums Service and currently works as both a bone specialist and in graphics for the NAU. She has been producing faunal remains reports for many years and produces assessment and analysis reports for clients across the East Anglian region. She has her own extensive bone reference collection built up over many years. Her particular interests in faunal remains are animal husbandry and pathologies. She has also worked as a conservator, particularly on Pleistocene vertebrates and a wide variety of archaeology and natural history projects at the Norwich Castle Museum. Julie is also an extra-mural lecturer with the University of East Anglia, teaching Animal bones in Archaeology.

### **Dr John A Davies (Norwich Museum) Roman coins**

John has, for some years, written reports on Roman coins from Colchester excavations. He specialises in barbarous radiates, and has contributed to *British Numismatic Journal* on that topic. Among his other publications is a contribution to *Colchester Archaeological Report 4: The coins from excavations in Colchester 1971-9*, and *CAR 9: Excavations on Roman and later cemeteries, churches and monastic sites in Colchester 1971-88 (1993)*.

### **Val Fryer (Norfolk) Environmental Archaeologist BA, MIFA**

Val has fifteen years experience in environmental archaeology, working for English Heritage, County Units and independent archaeological bodies across the United Kingdom and Southern Ireland. She has published reports in *East Anglian Archaeology* (including occasional papers), *Proceedings of the Prehistoric Society*, *Medieval Archaeology* and *Norfolk Archaeology*. Specialist work for various police authorities across England and Northern Ireland. Val is a Member of the Institute of Field Archaeologists with special accreditation for environmental archaeology and she is also a Member of the Association of Environmental Archaeologists.

### **Dr Jen Heathcote (English Heritage) Regional Science Advisor**

Jen Heathcote is a member of the Quaternary Research Association and the Association for Environmental Archaeology. She is English Heritage's Regional Science Advisor (RSA) for the East of England, providing regionally-based advice on all aspects of archaeological science: geophysics, scientific dating, hydrology, geoarchaeology, analysis of biological remains and technological residues, artifact analysis and conservation. RSAs give advice to a range of organizations and also produce good practice standards and guidelines. RSAs are all actively involved in research, and applying new methodologies to site investigation and management..

### **Hazel Martingell BA, FAAIS (Braintree): Lithics**

Hazel has for many years worked as a lithics illustrator and specialist, undertaking work for The British Museum, ECC Field Archaeology Unit and for



London and Cambridge Universities, to name but a few. Since 1987 she has been self-employed and has excavated at a Middle Stone Age site at Gorham's Cave, Gibraltar as well as writing and illustrating worked flint reports for CAT, ECC FAU, and the British Museum. Her impressive publication record includes reports on sites from around the globe. Closer to home she has published work in *Essex History and Archaeology*, *The East Anglian Archaeology Monograph series*, *Antiquity* and *British Museum Occasional Papers*. Hazel is a fellow of the Association of Archaeological Illustrators and Surveyors and a founder member of the Lithics Study Group, London.

#### **Valerie Rigby (Hertfordshire) LIA ceramics**

Formerly working for the British Museum, Val is one of the country's leading authorities on later prehistoric ceramics in general, and traded wares in particular. She has published widely. Her major work include *Baldock : the excavation of a Roman and pre-Roman settlement, 1968-72 (Britannia Monograph Series 7, with Ian Stead)*. On a more local level, she has contributed to the magisterial *Colchester Archaeological Report 10: Roman pottery from excavations in Colchester 1971-88*, and to Ros Niblett's *Sheepen: an early Roman industrial site at Camulodunum (CBA Research Report 57, 1985)*.

#### **Patricia Ryan (Chelmsford) Medieval and later brick and tile**

Pat has for many years been examining excavated collections of brick and tile from Essex sites, and contributing reports which are usually consigned to the gloomier parts of archive reports, or as footnotes in published texts. Her regular contributions to *Essex Archaeology & History*, therefore, under-represent the devoted study which Pat has put in over the years. Nobody knows more about local brick and tile, except for David Andrews, with whom she collaborated on significant sections of *Crissing Temple: A Templar and Hospitaller Manor in Essex (1993)*.

#### **Dr Paul Sealey (Colchester Museum) Amphoras**

Paul has worked at Colchester Museum since the late 1970s. His PhD specialism was Roman amphoras, a topic on which he writes specialist reports. His main areas of interest are prehistory and the Roman period, and he has developed a familiarity with those periods and their ceramics. He has published widely. His major works include *Amphoras from the 1970 excavations at Colchester Sheepen (BAR 142, 1985)*, contributions to Ros Niblett's *Sheepen: an early Roman industrial site at Camulodunum (CBA Res Rep 57, 1985)*. He regularly contributes to *Essex Archaeology & History*.

#### **Sue Tyler (ECC) Saxon Pottery**

Sue is the County authority on Saxon material, especially pottery. She has had several spells working with Essex County Archaeology Section, interrupted by a late-1980s spell in Hertfordshire. She has written reports on Saxon material for many Essex Projects, and contributes regularly to *Essex Archaeology & History*,

including the Anglo-Saxon cemetery at Prittlewell (*Essex Archaeol Hist* 19 (1988)).

**Helen Walker BSc (ECC) Medieval and post-medieval pottery.**

Helen is Essex County Council Field Archaeology Group's medieval and post-medieval pottery specialist. Before joining ECC in 1985, she worked on finds in Carmarthen, and for Hampshire CC on projects in Winchester. Since 1985, she has contributed reports on ceramics to many other projects in the county. A regular contributor to *Essex Archaeology & History*, her principal publications include reports on the Rayleigh kiln dump, and George Street and Church Street, Harwich (*Essex Archaeology & History*, 21 [1990]), and North Shoebury (*EAA* 75).





01



02





03



04





05



06





07



08





09



10





11



12





13



14





15



16





17



18





19



20





21



22





23



24





25



26





27



28



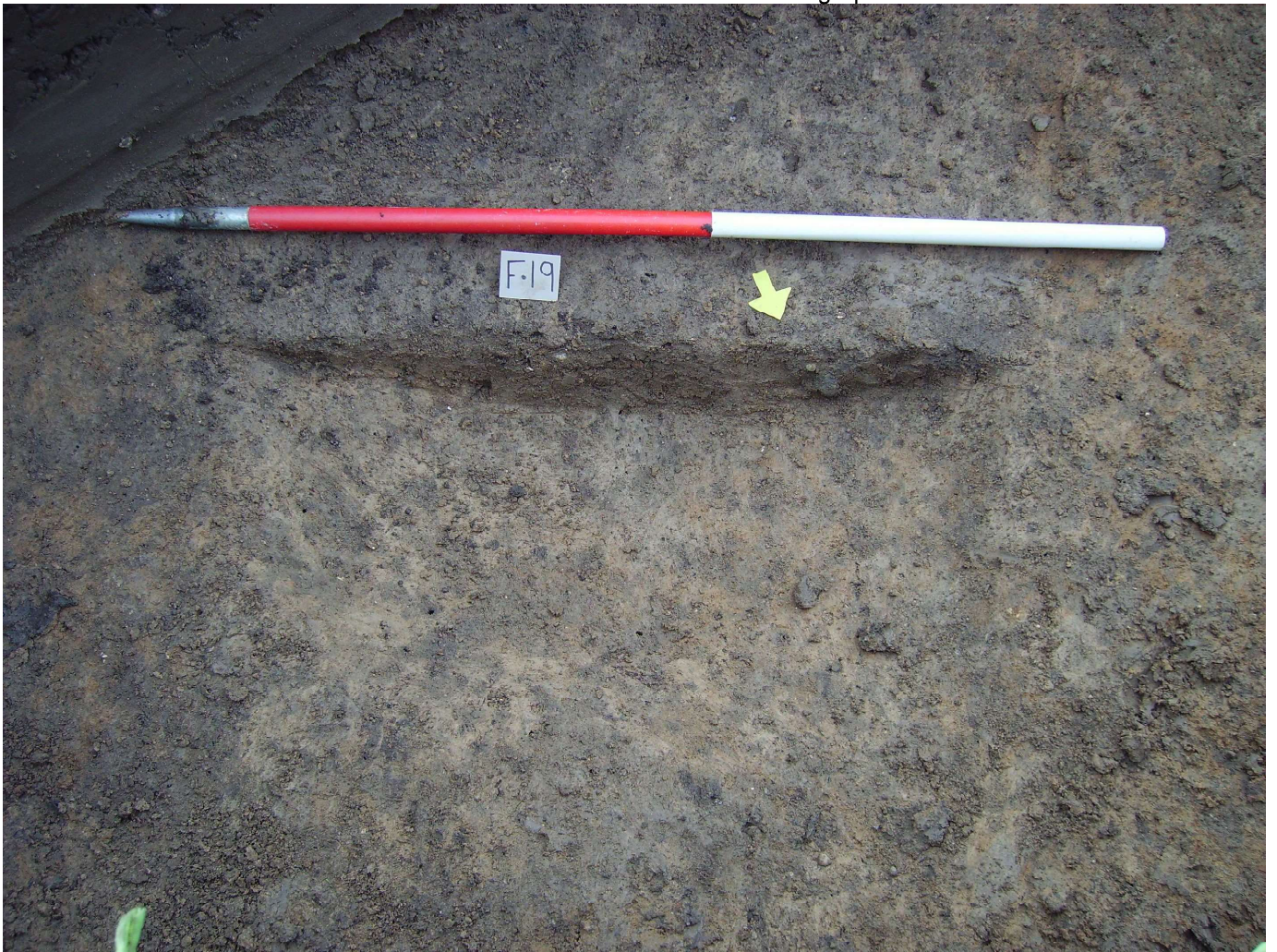


29



30





31

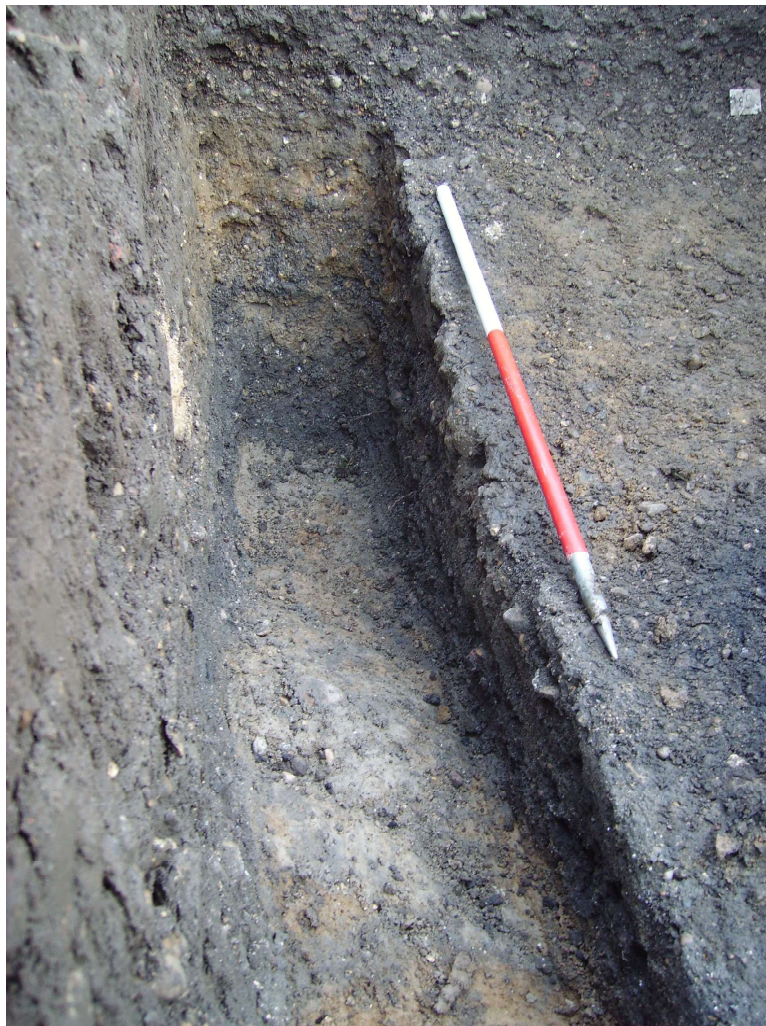


32





33

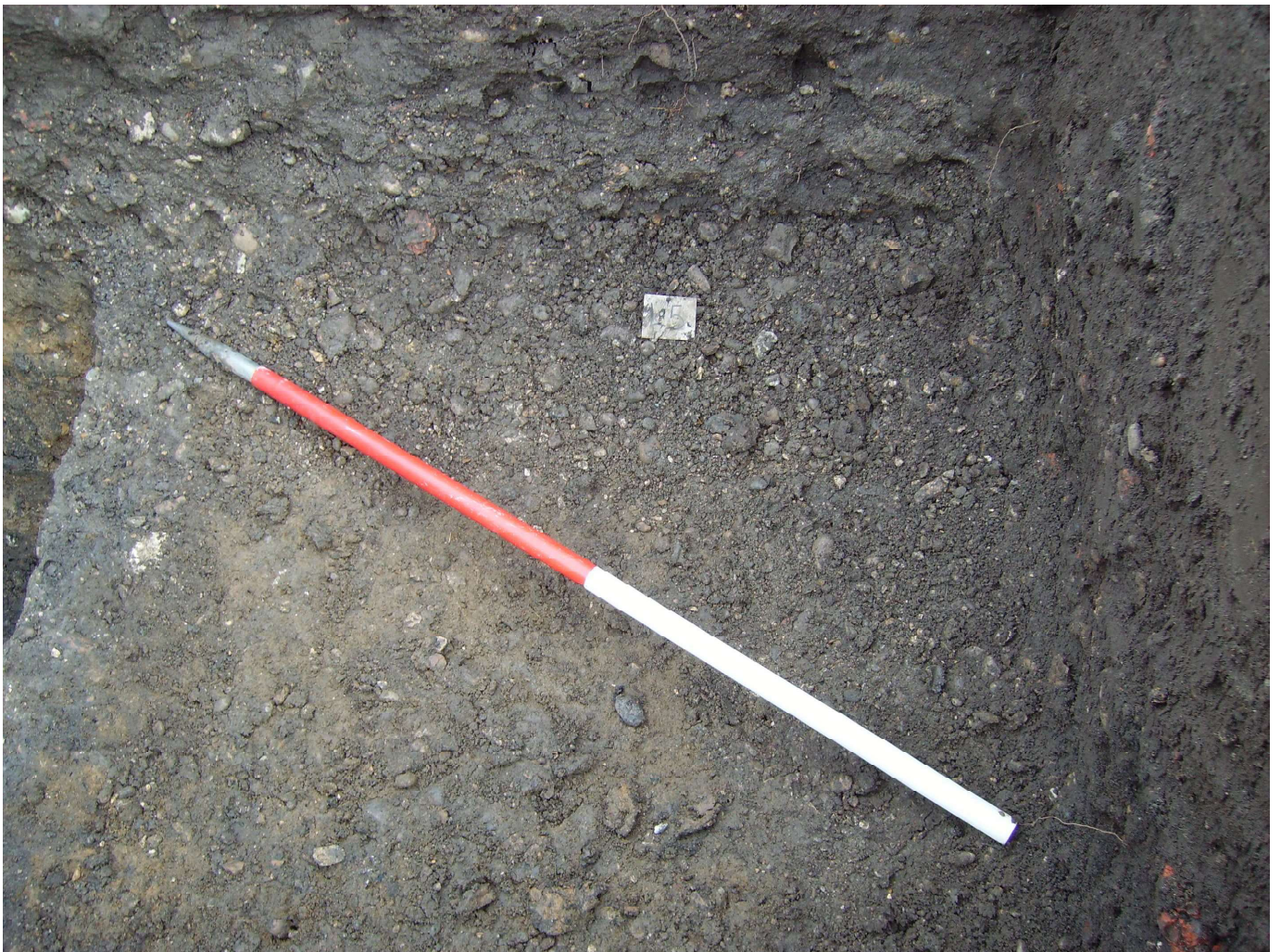


34





35



36





37



38





39



40





41



42





43



44





Photographic log for Colchester St Helena School Car Park WB

Filename	Description
07.07b_PhotoGraph_01.jpg	Trench 1 showing Sx through F2 - view west
07.07b_PhotoGraph_02.jpg	Trench 1 showing Sx through F2 - view west
07.07b_PhotoGraph_03.jpg	Trench 1 showing F4 - view west
07.07b_PhotoGraph_04.jpg	Trench 1 showing F11 - view north
07.07b_PhotoGraph_05.jpg	Trench 1 showing F11 - view north
07.07b_PhotoGraph_06.jpg	Trench 1 showing F1 - view south
07.07b_PhotoGraph_07.jpg	Trench 1 showing F1 - view south
07.07b_PhotoGraph_08.jpg	Trench 1 showing F1 - view west
07.07b_PhotoGraph_09.jpg	Trench 2 showing F5 - view north
07.07b_PhotoGraph_10.jpg	Trench 2 showing F5 - view north
07.07b_PhotoGraph_11.jpg	Trench 2 showing F6 - view west
07.07b_PhotoGraph_12.jpg	Trench 2 showing F6 with F7 - view west
07.07b_PhotoGraph_13.jpg	Trench 2 showing F7 - view east
07.07b_PhotoGraph_14.jpg	General site photo showing Trench 2 - view south
07.07b_PhotoGraph_15.jpg	Trench 2 showing F8 view east
07.07b_PhotoGraph_16.jpg	Trench 2 showing F8 view north-east
07.07b_PhotoGraph_17.jpg	General site photo showing Trench 1 - view east
07.07b_PhotoGraph_18.jpg	Trench 2 showing F9 - view north-east
07.07b_PhotoGraph_19.jpg	Trench 2 showing F10 - view east
07.07b_PhotoGraph_20.jpg	Trench 2 showing F13 - view south-east
07.07b_PhotoGraph_21.jpg	Trench 2 showing F13 - view south-east
07.07b_PhotoGraph_22.jpg	Trench 3 showing F14 - view east
07.07b_PhotoGraph_23.jpg	Trench 3 showing F14 - view east
07.07b_PhotoGraph_24.jpg	Trench 6 showing F15 - view east
07.07b_PhotoGraph_25.jpg	Trench 6 showing F15 - view east
07.07b_PhotoGraph_26.jpg	General site photo showing Trench 6 - view north-west
07.07b_PhotoGraph_27.jpg	Trench 6 showing F16 - view east
07.07b_PhotoGraph_28.jpg	Trench 1 showing F18 - view west
07.07b_PhotoGraph_29.jpg	Trench 1 showing F18 - view west
07.07b_PhotoGraph_30.jpg	Trench 1 showing F17 - view east
07.07b_PhotoGraph_31.jpg	Trench 1 showing F19 - view north-east
07.07b_PhotoGraph_32.jpg	Trench 1 showing F12 - view north-east
07.07b_PhotoGraph_33.jpg	Trench 1 showing F12 - view north-east
07.07b_PhotoGraph_34.jpg	Trench 1 showing F3 & L5 - view east
07.07b_PhotoGraph_35.jpg	Trench 1 showing F3 & L5 - view east
07.07b_PhotoGraph_36.jpg	Trench 1 showing L5 - view - east
07.07b_PhotoGraph_37.jpg	Trench 1 showing L5 - view - south-east
07.07b_PhotoGraph_38.jpg	General site photo showing Trench 1 - view west
07.07b_PhotoGraph_39.jpg	General site photo showing Trench 1 - view north-west
07.07b_PhotoGraph_40.jpg	General site photo showing Trench 5 - view north-east
07.07b_PhotoGraph_41.jpg	General site photo showing Trench 5 - view north-east
07.07b_PhotoGraph_42.jpg	General site photo showing Trench 4 - view east
07.07b_PhotoGraph_43.jpg	General site photo from Trench 4 showing Trench 5 & 6 - view north
07.07b_PhotoGraph_44.jpg	General site photo showing Trench 4 - view north-west
07.07b_PhotoGraph_45.jpg	General site photo showing Trench 4 - view south-west